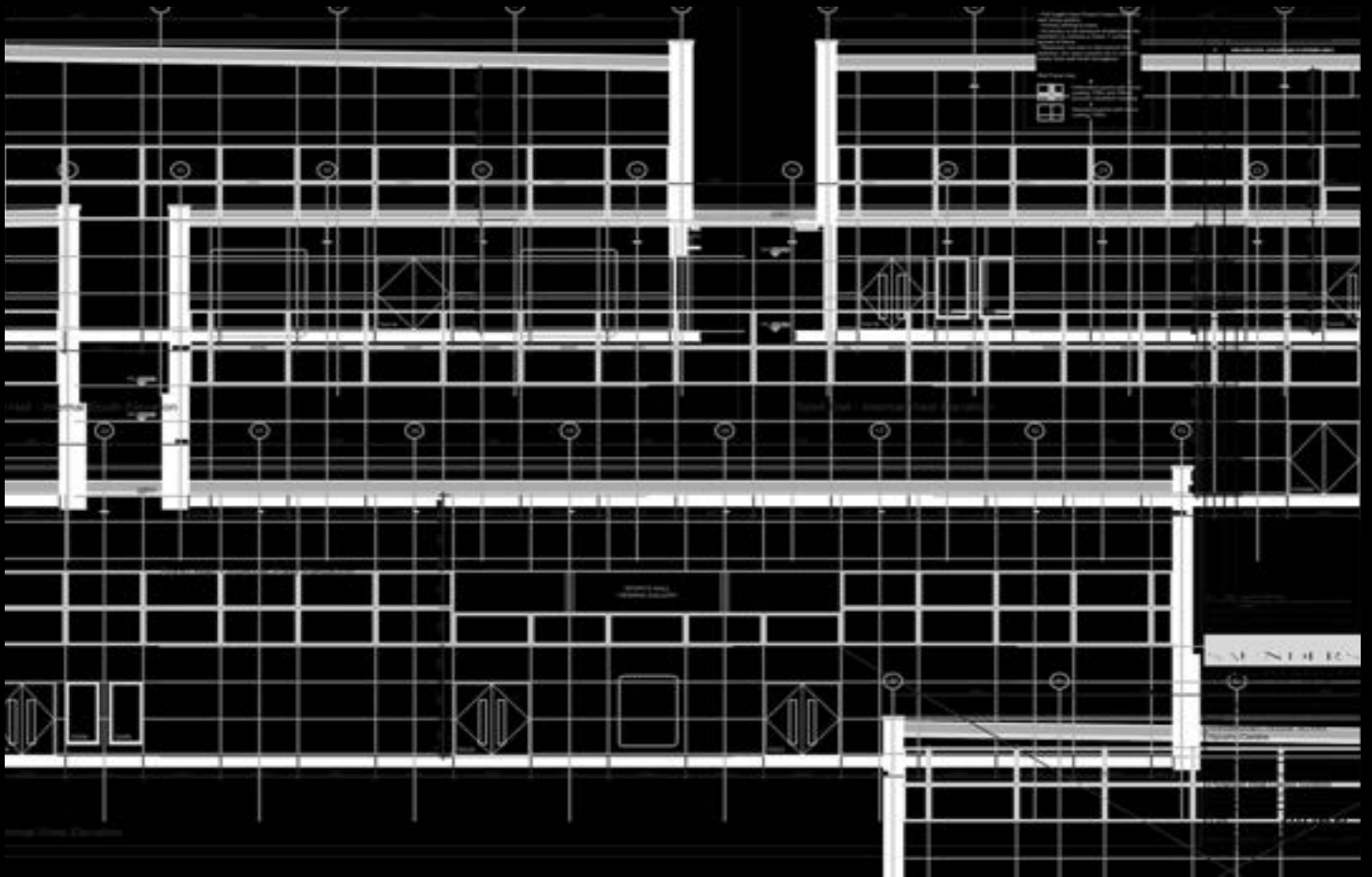


# DYNAMIK

## Internal Sports Wall Panels



Sports Flooring Acoustic Walling

Track & Gym Maintenance & Protection



# DYNAMIK

With over 25 years' experience, DYNAMIK are leading providers of indoor sports solutions including sports walling, sports flooring, track and gym surfaces.

We provide the specification, supply and installation of premium sports systems, enabling us to offer solutions that perfectly meet both the needs of a facility and its users.

Our panels provide a durable and cost-effective solution when installed from floor to soffit.

Our premium sports wall panels come pre-finished in a range of colours or wood effects, making them easy to clean, highly durable and decorative.

Using perforated acoustic panels creates an ideal environment for sport.

## Official Partners



# | What We Offer

- UK Manufactured, supplied & installed
- Fully warranted DYNAMIK supply and installation service available Nationwide
- One-Stop-Shop DYNAMIK supply & installation joinery service
- Panels certified for sports environments
- Solid & Perforated (Acoustic) wall panels
- Easy fix, clip system
- Fire-Rated Panels & Factory Applied Finishes



## | Our Credentials

- Over 25 years supporting British Sport
- Member of the Sports Facilities Group (SFG)
- Meets Sport England requirements & ESFA
- Fully FSC & PEFC certified
- RIBA Product Selector, BIM & NBS Source
- SAPCA Indoor Sport Members
- National Governing Body Supply Partnerships

# Introduction

DYNAMIK Internal Sports Walling panels are both durable and cost effective and can be fitted from floor to soffit. Perforated (Acoustic) Sports panels can be easily incorporated above door height to provide an acoustic solution.

Additionally, Fabric Acoustic Panels can be fitted directly onto any solid wall to provide an instant acoustic Class A sound reduction solution, ideal for refurbishment projects.

## DYNAMIK Internal Sports Wall Panelling

The DYNAMIK Panels provide a highly decorative and durable solution for busy sports hall environments. With high scratch, impact resistance and certified for sport, the panels are designed to be an integral component of the internal wall construction and can be fitted from floor to soffit.

Solid panels can be combined with Perforated (Acoustic) panels to provide a continuous, flush wall finish.

### Principle Features

**Durability & Impact Resistance** – Provides superior impact resistance from balls, equipment and hall users. This allows for both solid and acoustic panels to be used from floor to soffit.

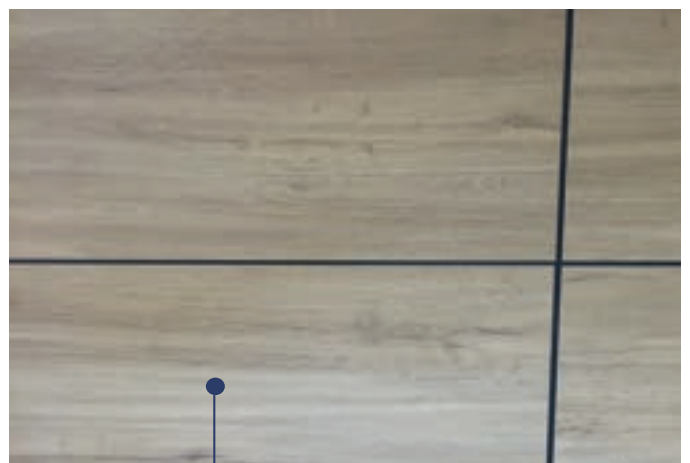
**Time & Cost Savings** – Can be installed in combination with structural SFS or timber studwork. This eliminates the need for blockwork and other wet trades.

**Factory Finished** – Every panel is factory finished with a low maintenance, UV resistant, durable surface that does not require re-finishing over the life of the product.

**Secret Clip Fixings** – The supplied secret clips offer a fast and easy panel installation which eliminate unsightly surface fixings. They also provide a consistent spacing between adjoining boards.

**Fire Performance** – The complete system - panel, face, core and fleece has been fire tested and rated to European Class B-S1-d0.

**Colours** - The panels are available in a range of colours & wood effects to provide a modern appearance that complements the sports floor and can achieve the required Light Reflectance Values (LRVs).



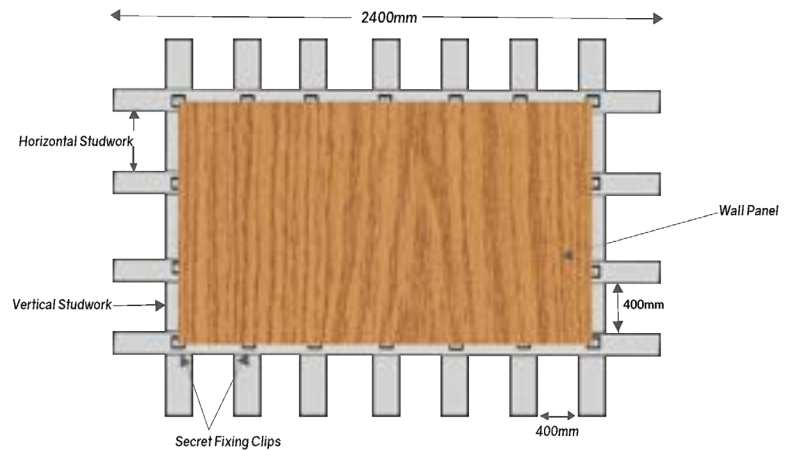
Solid panel

Perforated (Acoustic) panel



# Fixings & Installation

The panels are typically fixed to timber horizontal battens at 400mm centres which are packed level without undulation or steps. Studwork or the supporting structure must be free of flex and movement. A black acoustic shadow membrane is placed over the studwork to "effectively" hide the gap between the panels and make the black metal brackets appear "invisible". The panels are then installed using the supplied secret clips to ensure a consistent 7mm spacing between adjoining boards. Insulation can be incorporated behind the panels to enhance thermal resistance and acoustic performance. \*



\* Subject to project specific design requirements

## Technical & Performance Specifications - Solid & Perforated (Acoustic) Panels

Panel Face	Factory finished, available in a range of colours or wood effects
Panel Backing	Engineered Board
Fire Performance	Rated to European Class B - S1-d0
Panel Sizes (l x w x d)	Solid: 2400mm x 1200mm x 18mm / 2400mm x 592mm x 18mm Perforated: 2400mm x 1200mm x 18mm / 2400mm x 592mm x 18mm (Confirm prior to final design)
Compliance	Building Regulations, ESFA & Sport England Compliant
Panel Weight	Solid Panels: 40.60kg / 19.92kg Perforated Panels: 38.72kg / 18.96kg
Acoustic Performance	Class A - Perforated panels (50x50mm batten system) Class B - Perforated panels (25x50mm batten system)

# DYNAMIK Acoustic Fabric Panels



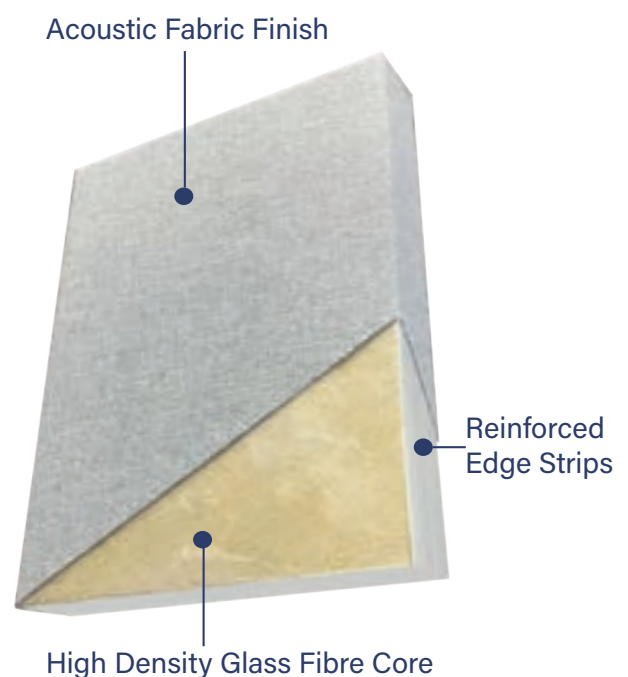
**Durability & Impact Resistance** – A high density glass fibre core designed for superior impact resistance from balls, equipment and hall users. Certified for sport usage.

**Time & Cost Savings** – The panels are easily installed to any solid surface providing a cost effective acoustic solution ideal for refurbishment.

**Channel-Free Fixing** – The supplied impaling spikes offer a fast panel installation method and eliminate unsightly trim or corner fixings.

**Fire Performance** – The panels are rated as European Class B-S1-d0 to comply with Building Regulations, Sport England and the Department of Education - Education & Skills Funding Agency (ESFA) requirements.

**Colours** - Panels are custom made in over 75 fire rated coloured fabrics to provide a modern appearance that complements the sports hall design.



## Installation

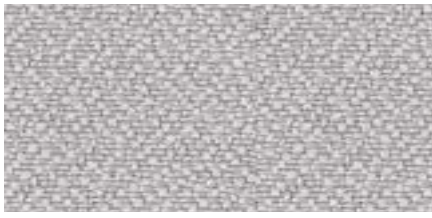
Installation is quick and easy since each panel only weighs 14.5kg and can be fixed to a range of solid surfaces including timber, concrete, masonry, or plaster. UK manufacture allows for a fast order-to-site process.

## Technical & Performance Specifications - Acoustic Fabric Panel

Panel Sizes	2700mm x 1200mm (Other panel sizes available on request)
Panel Depth	40mm
Panel Weight	4.5 kg / m <sup>2</sup>
Fire Performance	Rated to European Class B - S1-d0
Acoustic Performance	Class A (0.95 NRC)
Compliance	Building Regulations, ESFA & Sport England compliant

# Fabric Finishes

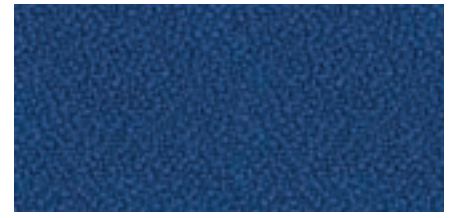
The Acoustic Sports Panels are available in a large range of coloured fire-rated fabrics including the following:



**Rum**



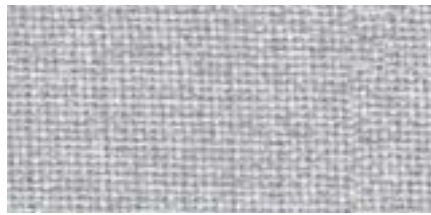
**Dolphin**



**Ocean**



**Carron**



**Glass**



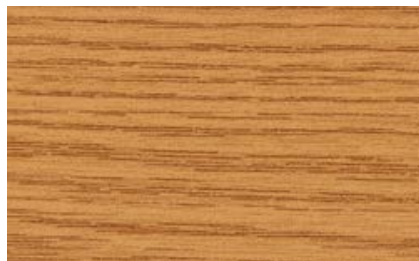
**Calypso**

## Colour & Wood-Effect Finishes

The Solid & Perforated Sports Panels are available in a wide range of wood-effect & solid colour finishes, including:



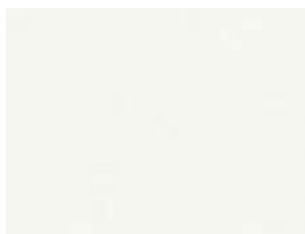
**White Oak**



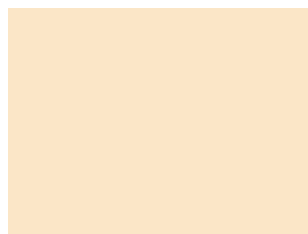
**Light Oak**



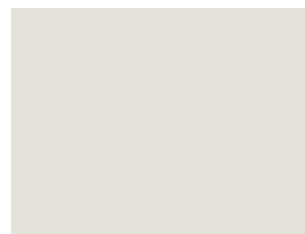
**Sonoma Oak**



**White**



**Light Ivory**



**Silver Grey**



**Light Grey**



**Grey**



**Sky Blue**



**Pastel Blue**



**Sage**

# Sport Hall Acoustics Explained

## Performance Standard & Regulations

High sound levels are experienced within the majority of busy sports and activity spaces. To be able to communicate clearly, reductions in reverberation and acoustics benefits teaching staff, coaches, and players alike.

The overall objective of the acoustic performance standards is to ensure that the design and construction of school buildings, including sports halls provide acoustic conditions that enable effective teaching and learning.

It is accepted that noise and poor acoustic design have a detrimental effect on pupils' academic performance and teachers' vocal health.

Pupils with additional learning needs or hearing impaired pupils are particularly susceptible to the negative effects of poor acoustic design.

Practically speaking this means reverberation time (Tmf).



## What Do We Mean By Reverberation Time?

Reverberation time is one of the key determinants of room acoustic quality, and the factor to control with regard to sound absorption. It is the time it takes for a sound to reduce by 60db within a given space. It is measured at different frequencies since certain frequency ranges are more important than others.

## How Can We Control Reverberation?

The amount of sound energy a material will absorb is known as the absorption coefficient. Typically reverberation is controlled by introducing sound absorbing surfaces. More effective absorbers and increased coverage within a room will lead to lower reverberation times.

## Practical Implications

Once the size of a room and the absorption characteristics of the finishes are known, an acoustician can predict the reverberation time. They can then calculate the amount and type of sound-absorbing material to be included to meet a particular room's usage and a designer's preference.

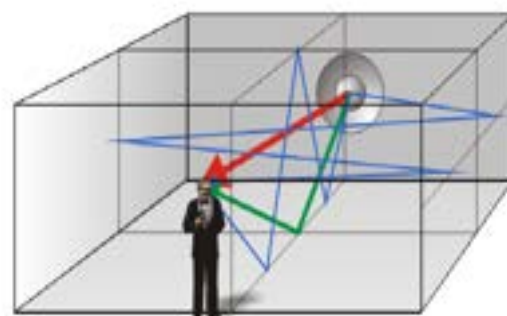
Apart from sport activities, sports halls are also used for exams and assemblies, acoustic demands are therefore very high and complex. Having large amounts of sound absorption is necessary to achieve a pleasing acoustic environment. The choice of materials is also essential as they need to be impact resistant.

Sound absorption should be distributed within a room with a minimum of 25% from the walls, 30% from the soffit and the remaining 45% provided by finishes on any of the room surfaces. It is beneficial for the sound absorption materials to be installed at a lower level rather than higher to improve their effectiveness.

In our experience, sports teachers are more prone to having throat or voice issues than any other subject teachers, as they need to raise their voice due to high levels of background noise.

Good acoustic design is important because long reverberation times result in:

- Low speech accuracy
- Excessive levels of background noise
- Raised levels of stress for users
- Controlling and management issues









# DYNAMIK's Recent Projects

## Universities

- Cardiff Metropolitan University
- Durham University
- Liverpool John Moores University
- Southampton Solent University
- University of Cambridge
- University of East London (UEL)
- University of Essex
- University of Gloucestershire
- University of Liverpool
- University of Oxford
- University of St Andrews
- University of Ulster, Belfast



## Schools

- Altrincham Grammar School
- Avanti Grange
- Beaulieu Sports Hall
- Bishop Ullathorne
- Bishop Stortford High School
- Cheltenham Secondary School
- Cothill House Boarding School
- Harris Academy
- Lockers Park School
- Loretto School
- Mickleham School
- Millfield School
- Merchant Taylors' School
- North Oxfordshire Academy
- Notting Hill & Ealing School
- Rochester Grammar School
- Upton Court Grammar School



## Colleges

- Barking & Dagenham College
- Britannia Royal Naval College
- Cheltenham Ladies College
- Dulwich College
- Ealing & Hammersmith College
- Emmanuel College
- Hartpury College
- Jane Austen College
- Myerscough College
- Newbold College of Higher Education
- Perth College (University of the Highlands and Islands)
- South Gloucestershire and Stroud College
- Torquay College



## Leisure Centres & Other Projects

- Bury Roller Skating Arena
- Coronation Square
- English Institute of Sport
- Five Rivers Leisure Centre
- Greenhouse Sports Centre
- Hillsborough Leisure Centre
- Jubilee Community Sports Centre
- National Basketball Performance Centre
- National Centre for Circus Arts
- Onside Youth Zone Nationwide Projects
- Poplar Baths Leisure
- R.A.F. Digby
- Sandwell Aquatic Centre

# | Official Sports Flooring Partners:



## | Supply Partners:



## | Members of



Unit 10 Enterprise Trade Centre  
Roman Farm Road  
Bristol, BS4 1UN

0117 301 5120  
info@dynamiksport.co.uk  
www.dynamiksportsfloors.co.uk

