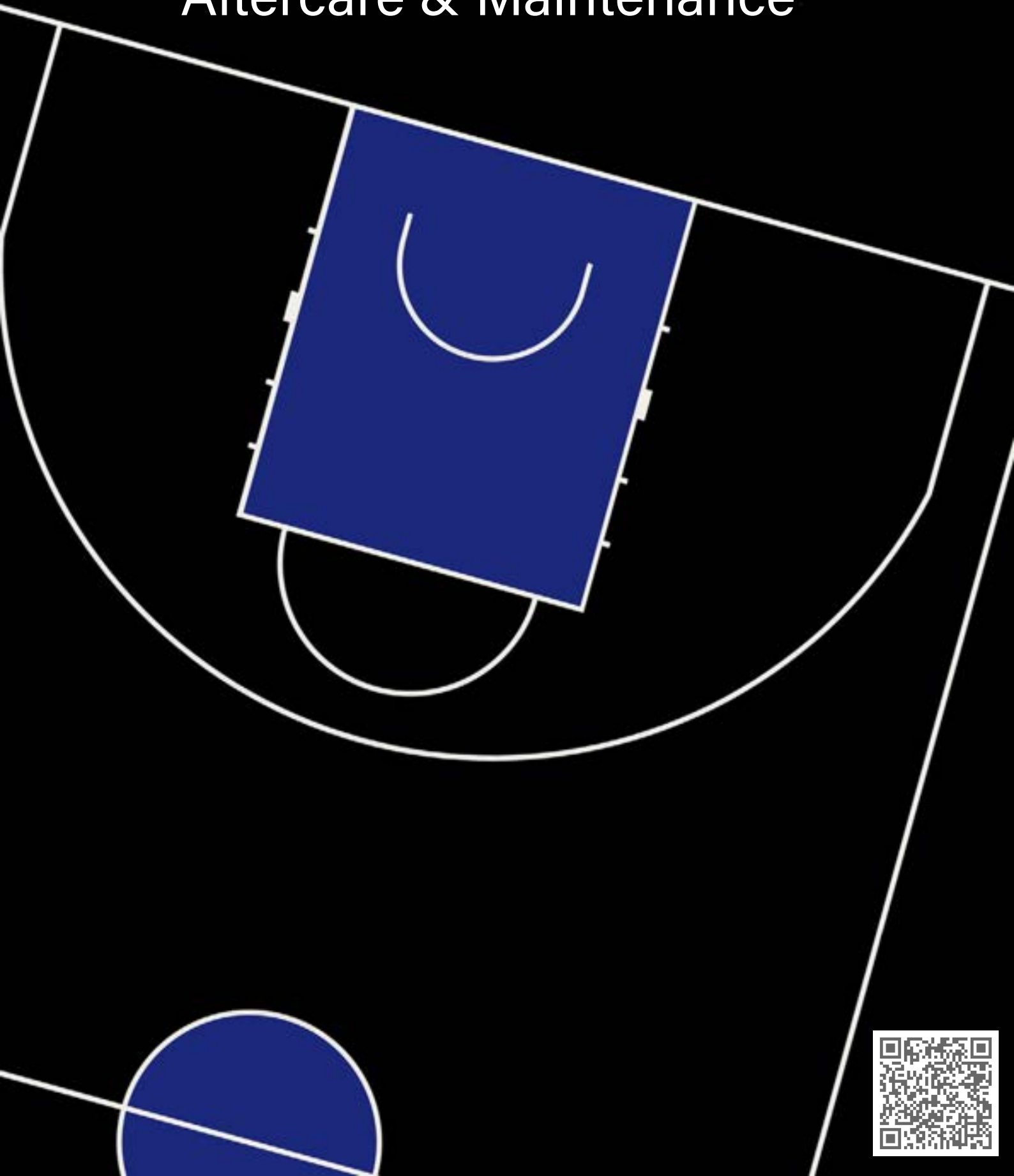


DYNAMIK

Aftercare & Maintenance





DYNAMIK

With over 25 years experience and in excess of 130 sports floors installed each year, DYNAMIK are leading UK providers of Indoor Sports Flooring, Protection, Aftercare & Maintenance Services.

We provide the design, supply and installation of premium sports floors, enabling our Aftercare team to offer advice and protection solutions that perfectly meet both the needs of your facility and its users.

Official Sports Flooring Partners

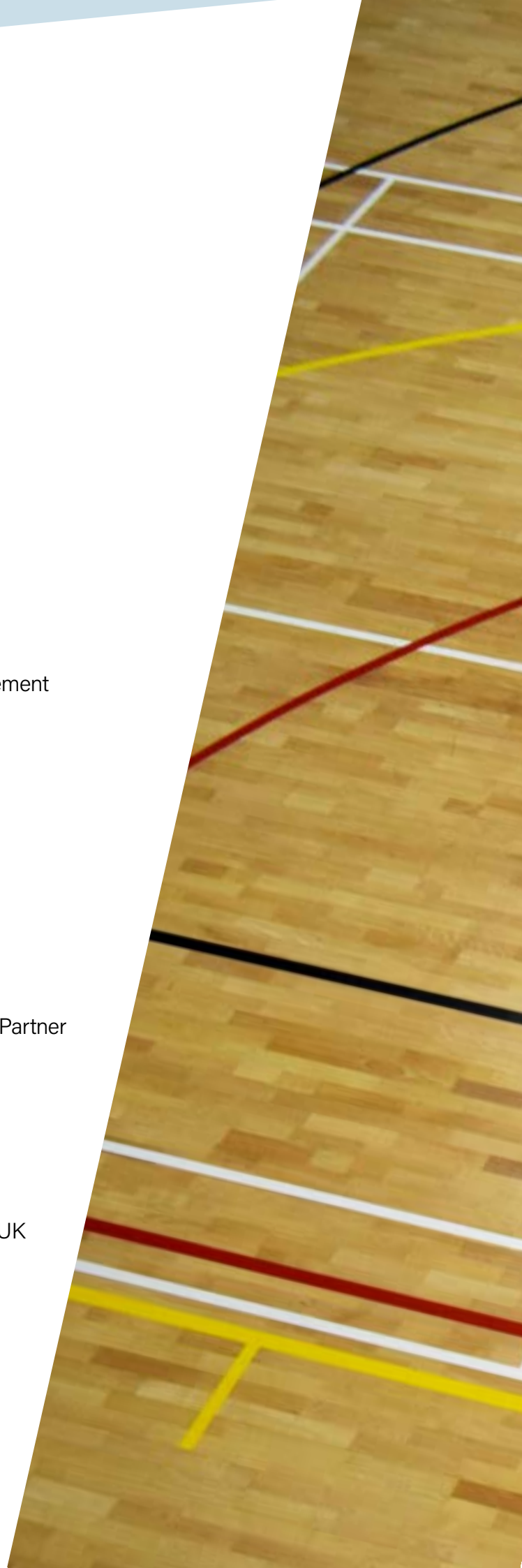


What We Offer

- Floor Protection - DYNAMIK Giant Carpet Tiles
- Line Marking - Consultation, Design & Approval
- Line Marking - Preparation & Installation
- Maintenance - Sand, Lacquer Seal & Protect
- Maintenance - Resilient System
- Maintenance - Polyurethane (PU) Refurbishment
- Aftercare - Deep Clean, Re-Seal to Protect
- Bespoke Logo and Court Design
- Bespoke Court Zone Staining
- Painted Court Surrounds
- Basketball Keys & Centre Circle Infills
- Floor Repairs - Indoor Resilient Surfaces
- Floor Repairs - Timber Board Reconstruction or Replacement

Our Credentials

- Over 25 years supporting British Sport
- Basketball England Official Partner
- England Netball Official Indoor Sports Flooring Partner
- British Wheelchair Basketball Official Technical Partner
- British Basketball League (BBL) Official Sports Flooring Partner
- Basketball Wales Official Sports Flooring Partner
- Table Tennis Wales Official Sports Flooring Partner
- England Handball Official Sports Flooring Partner
- Member of the Sports Facilities Group (SFG)
- Over 130 sports floors installed per year throughout the UK
- Over 15,000m² of Floor Protection Distributed Each Year
- DBS Certified, HMP, MOD & Local Authority Approval
- Facility Management Company (FM) Approval
- In-House Aftercare Support Team
- One of the UK's Largest Providers of Maintenance, Surface Protection & Aftercare Services



DYNAMIK Aftercare & Maintenance

DYNAMIK offer Protection, Aftercare & Maintenance Services to preserve your Sports Hall, Studio or Village Hall, helping to maintain your floor system and surface throughout its life cycle.

Every floor requires regular Aftercare & Maintenance, not only to preserve aesthetics, but also the performance characteristics. Failure to do so can lead to deterioration of the playing surface, potentially making it slippery and unsafe for users.

Our Services Include:



Deep Clean & Re-Seal - Timber Only

This process includes a chemical clean to remove contaminants that can build up over time, causing the floor to become slippery. DYNAMIK mechanically abraid the surface to create a key, in preparation for new lacquer seals to be applied.



Professional Deep Clean

This process is used to remove dirt, grease and contaminants. A build-up of these can cause your floor to become slippery, as well as looking old and faded.



Sanding & Re-Seal - Timber Only

This process allows the wooden floor to be taken back to the bare timber surface, removing any old lacquers or painted lines. The floor is left with a smooth finish ready for the new applications of seal and line markings.



Wooden/Synthetic Floor Repairs

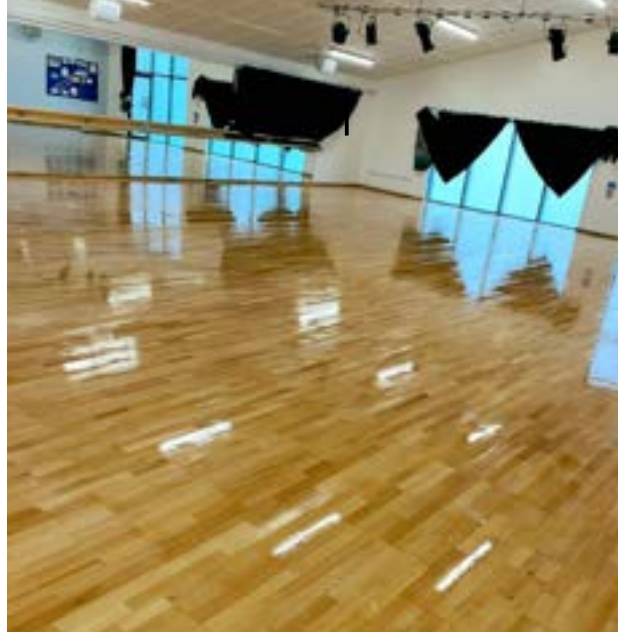
This process allows for your wooden and synthetic floors to be maintained by repairing minor/major damage to protect the playing surface and sprung undercarriage.

Dance Studio - Sand & Re-Seal

Before



After



Bona® Resilient by DYNAMIK

This process allows for the refurbishment of your existing sports floor, whilst reinstating the required slip resistance. Available in a range of RAL colours, allowing for the individualisation of your existing sports floor and the updating of line marking.



Before



After

HERCULON PU Refurb by DYNAMIK

This process allows for the refurbishment of your existing polyurethane sports floor whilst reinstating the required slip resistance. DYNAMIK have two options available dependent upon the condition of your existing surface; our PU Colour Coating Re-application and our PU Re-coating and Repair System. These options also allow for the updating of line marking and logos and also provide the opportunity to totally individualise your facility.



Before

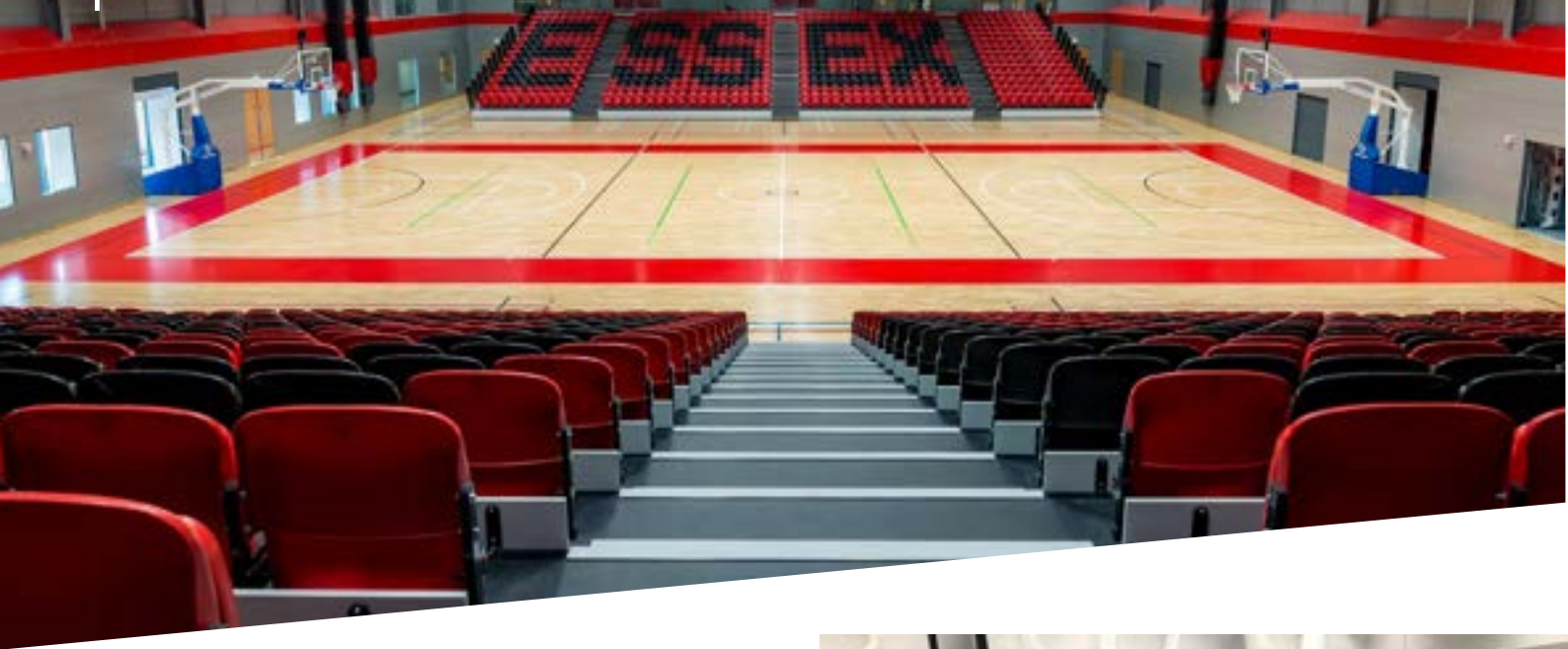


During



After

DYNAMIK Bespoke Design & Line Marking Services



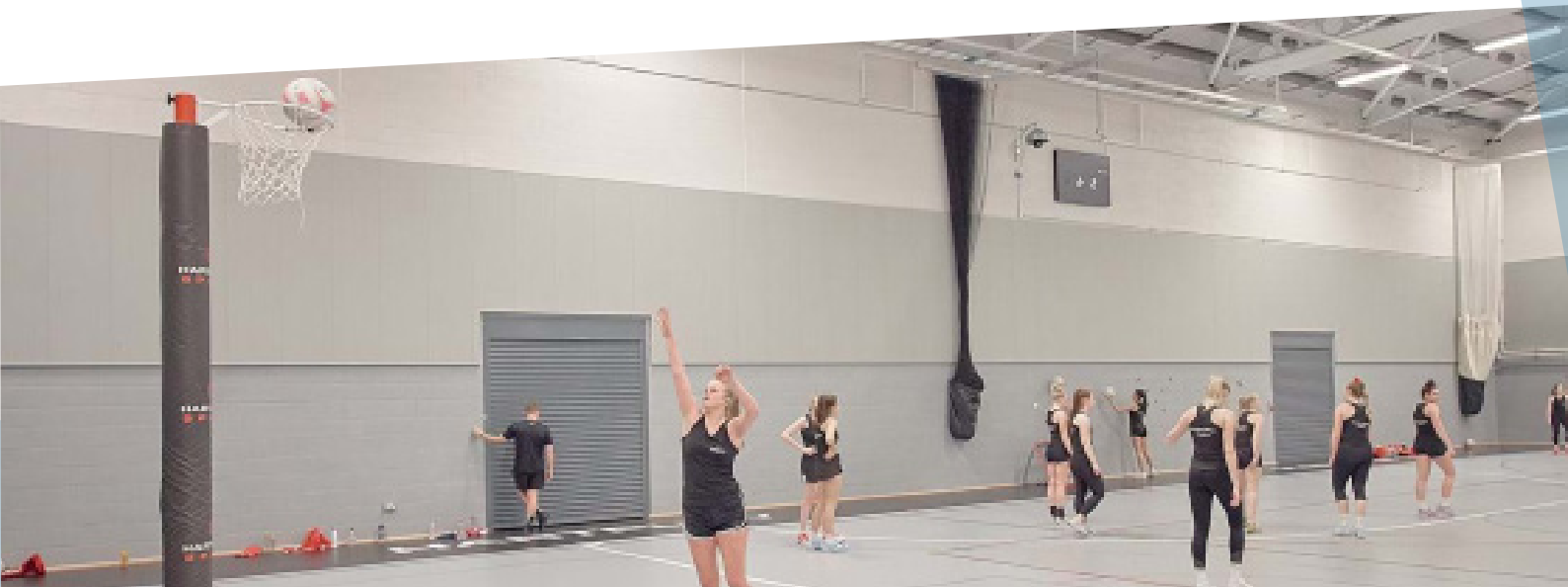
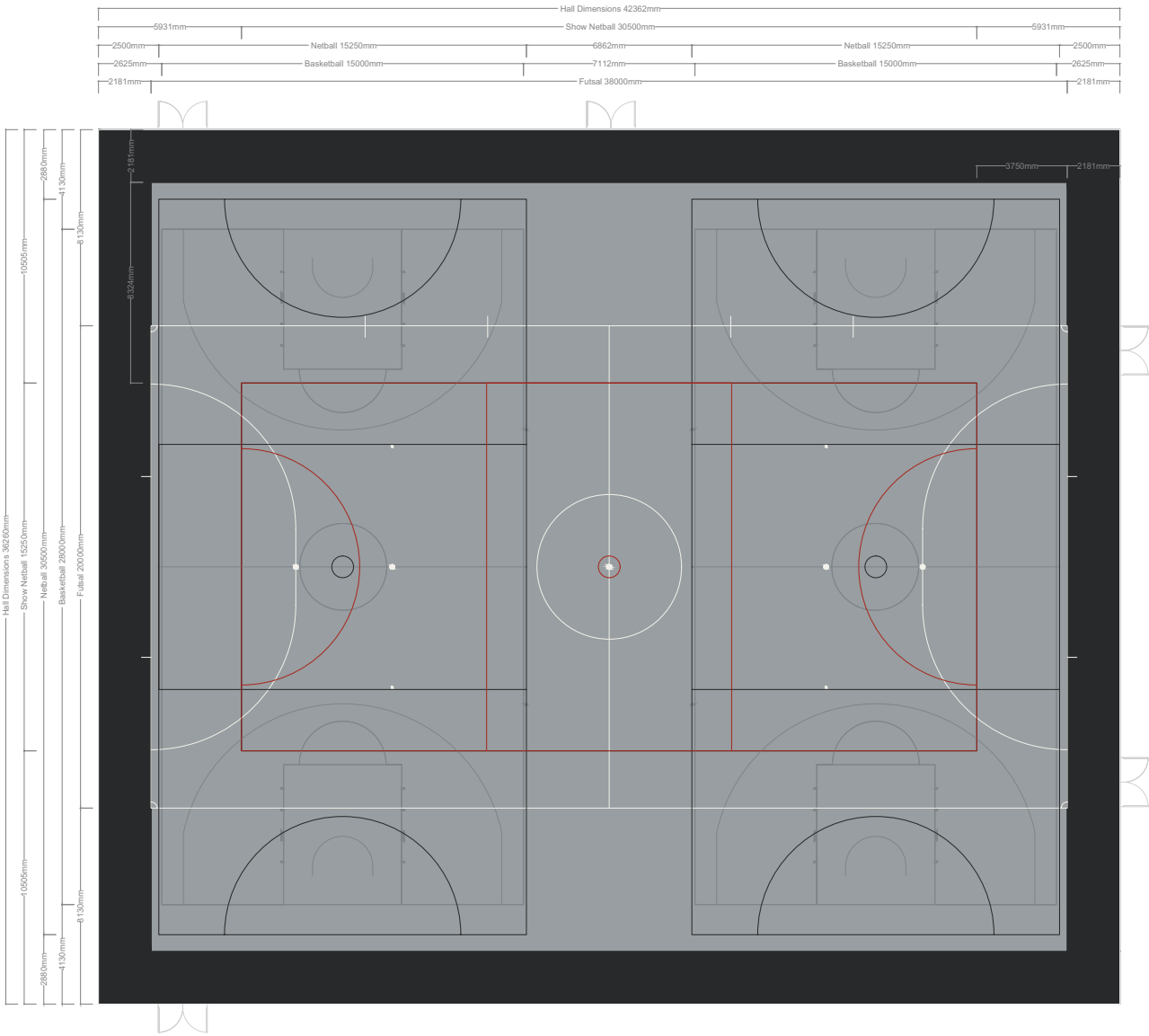
DYNAMIK's in-house design team work with you to create your vision by producing Autodesk CAD line-marking drawings, and court designs.



- Restore Worn or Faded Court Markings
- New Court Markings
- Bespoke Court Zone Staining
- Painted Court Surrounds & Logos
- Basketball Key and Centre Circle Infills
- Emblems, School Crests or Sponsor Decals

Line Marking

Line Marking is a vital component of your sports floor. We carry out the initial marking on your new sports floor and periodic re-marking due to wear and tear. The design and accuracy are key to your chosen sports, whether it is a multi-use, community or sport specific venue.



| DYNAMIK Sports Floor Protection

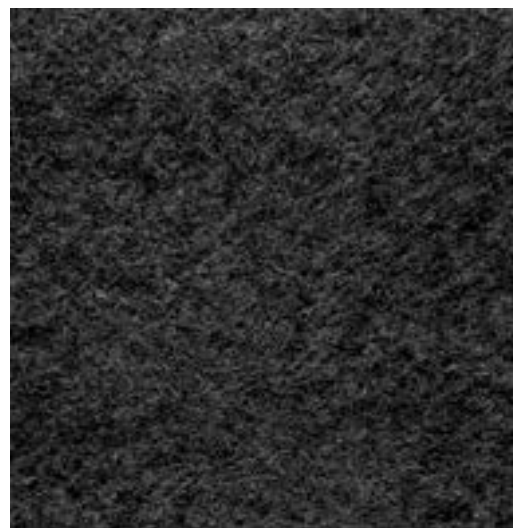
Floor protection should be used to maintain the condition of your flooring, protecting it from any damage.

- Designed specifically for Sports Floors
- Superior Indentation Resistance
- Scuff-free, high-grip backing (no bitumen)
- Underfloor Heating Compatible
- Easy to transport & store with DYNAMIK trolley
- 200m² of Carpet Tiles per trolley
- No adhesive or tape required
- Available in a variety of colours
- Fast-Track delivery available
- Ambient Noise Reduction
- 500m² of Carpet Tiles installed by two people in less than an hour

| DYNAMIK Giant Carpet Tiles



Oceanic Blue



Charcoal Grey

With our DYNAMIK Giant Carpet Tiles, the aesthetics of your hall will be transformed, making the space far more functional for occasions such as non-sporting social events and during examination periods when desks and chairs are used in the hall. As some schools only have one hall, DYNAMIK's Giant Carpet Tiles allow you to have the flexibility of using the hall for a different purpose.

The combination of a high density wear layer and our new polymer backing offers exceptional protection and does not leave bitumen residue or scuff marks on your existing surface.

Installation

The DYNAMIK Giant Carpet Tiles are easy to install as they simply sit neatly alongside each other. With two people, 500m² of carpet tiles can be laid in less than an hour. Installation could not be made easier by using our specialised DYNAMIK trolley, designed to both transport and store the tiles.

Step 1: Transport the Tiles

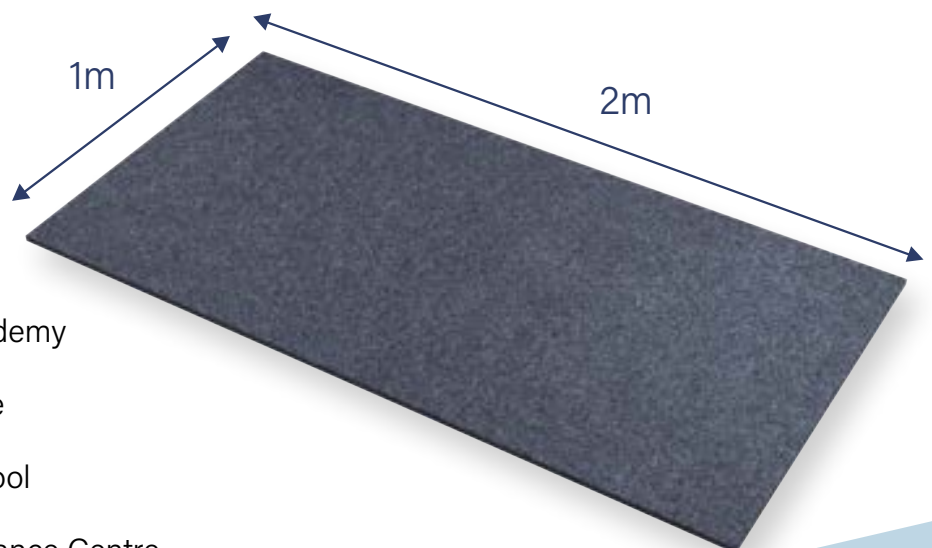


Step 2: Position the Tiles onto the Floor



A Selection of DYNAMIK's Carpet Tile Clients

- Hartpury College
- Newbold College
- Brighton College
- The John Leckie Academy
- The German School
- Staffordshire University Academy
- University of Gloucestershire
- The Manor Preparatory School
- National Basketball Performance Centre





A Selection of DYNAMIK's Maintenance Projects

Schools & Colleges

- Hartpury College
- Lambeth Academy
- Bulwell Academy
- Buttershaw Upper School
- Cardinal Heenan Catholic High School
- Royal Grammar School Newcastle
- Waldegrave School for Girls
- Oasis Academy John Williams
- New College Swindon
- Firvale School

Universities

- Manchester Metropolitan University
- Southampton Solent University
- University of Bristol
- University of Bath
- University of Cambridge
- University of Worcester
- University of Essex
- University of Oxford

Leisure Centres & Other

- Leicester Riders Arena
- English Institute of Sports Sheffield
- National Basketball Performance Centre
- Lime Kiln Leisure Centre
- Christie Miller Leisure Centre
- Robyn Park Sports Centre
- Worcester Arena
- The Regal & Jordan Courts
- Ashby St. Ledgers Village Hall
- London Lions Portable Court
- Netball Arena, Wales



Official Sports Flooring Partners:



Supply Partners:



Members of



Unit 10 Enterprise Trade Centre
Roman Farm Road
Bristol, BS4 1UN

0117 301 5120
info@dynamiksport.co.uk
www.dynamiksportsfloors.co.uk

DYNAMIK